



# 120 bi fold door

outstanding performance + modern lines

maximum thermal efficiency  $U_w$   
values from  $1.4 \text{ W/m}^2\text{K}$

maximum glazing  $45\text{mm}$  triple  
glazing available

Large certified sizes up to  $3\text{m}$  tall +  
 $1.2\text{m}$  wide

Security performance certified  
 $\text{PAS24}$

unbeatable performance; water  
(9A), air (4) + wind (A3)

minimalistic profiles  $120\text{mm}$  vertical  
section

open possibilities with up to  $14$   
sashes

efficient manufacturing + lead times

# 120

## bi fold door

### Technical Data Sheet



#### GLASS

4mm toughened outer / 20mm argon filled cavity / 4mm toughened inner with low e coating

Available on request Low Iron Glass, Low Maintenance Coatings, Solar Control Coatings, IQ Heated Glass, Privacy Glass, Electro Chromic Glass, Coloured/Decorative Interlayers (available on small sizes), Acoustic Interlayer (available on small sizes), Anti Reflective Glass

Maximum Glass Thickness 45mm

#### FRAME

Aluminium frame with polyamide thermal break, square bead, internally beaded.

Vertical Junction 120mm

Head Profile 101mm

Jamb Profile 100mm

Cill Profile 110mm

Frame Depth 73mm

#### MAXIMUM SIZES

1200mm wide x 3000mm tall per pane, 120kg

#### FRAME FINISHES

Powder coated in a RAL colour / Anodised / Sublimation / Dual Colour Available

#### PERFORMANCE

Uw Value 1.4–1.6 W/m<sup>2</sup>K\*

Air Permeability Class 4 in accordance with EN 12207

Water Tightness Class 9a in accordance with EN 12208

Wind Resistance Class A3 in accordance with EN 12210

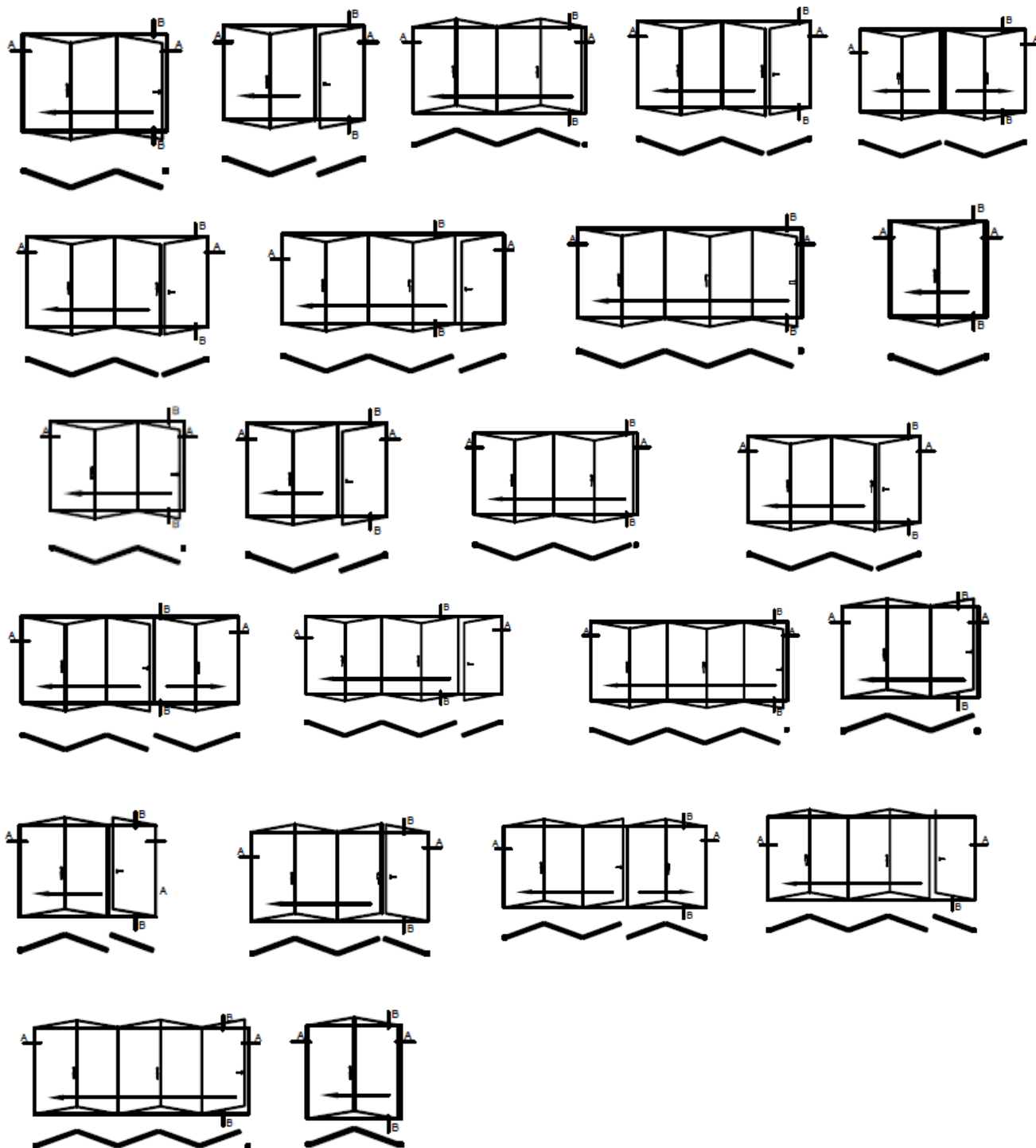
Security PAS 24:2012: Enhanced Security Performance Requirements for Doors and Windows in the UK

\*typical Uw value, individual project Uw values must be calculated per project.

120

# bi fold door

Example Configurations

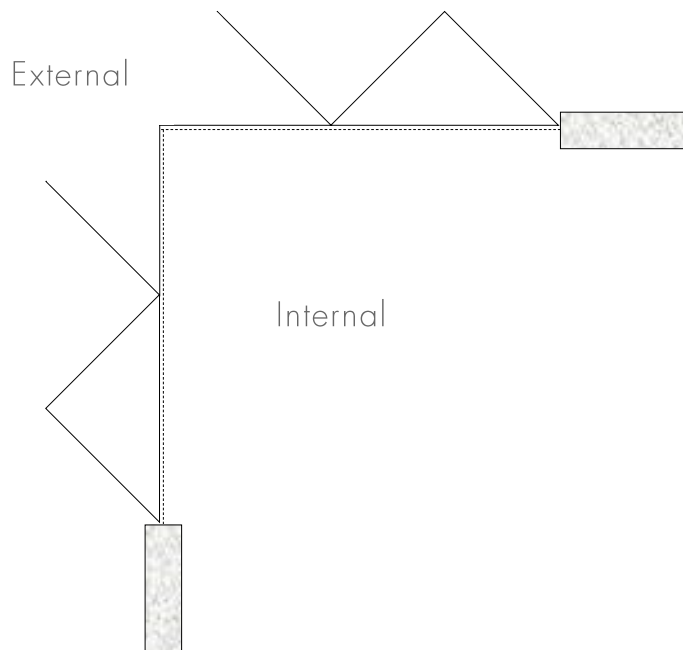


# 120

## bi fold door

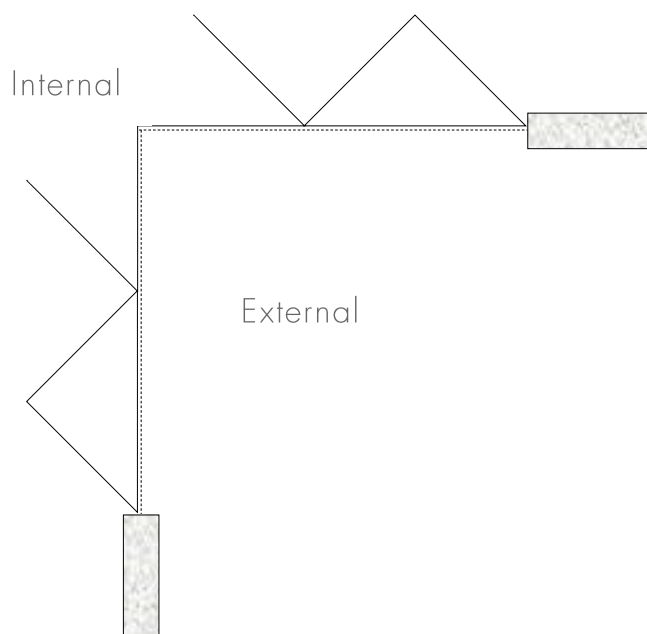
Corner opening configuration

### CONVEX CORNER



\* Opening corner Sieger 120 Bifolds are only available in an outward opening configuration on convex corners.

### CONCAVE CORNER



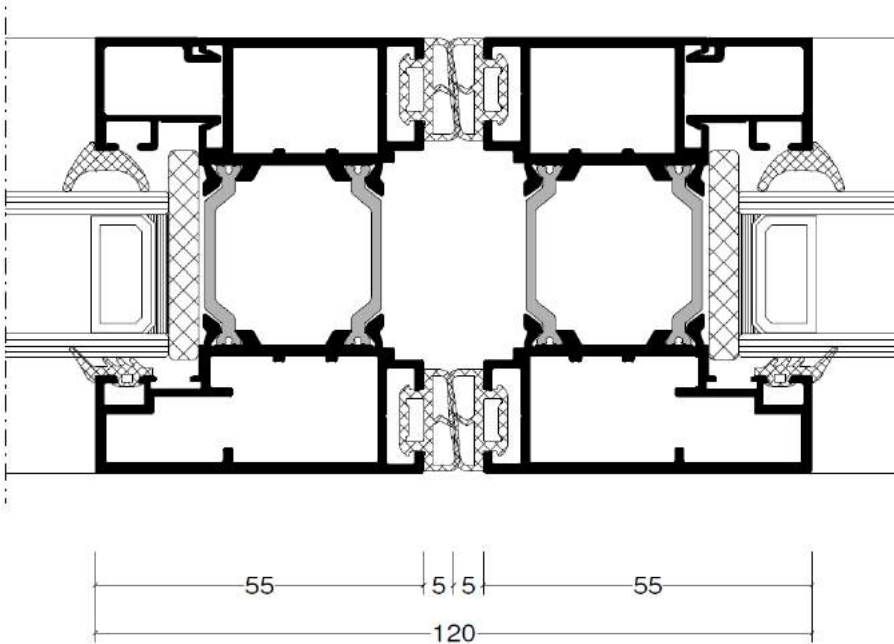
\* Opening corner Sieger 120 Bifolds are only available in an inward opening configuration on concave corners.

# 120

## bi fold door

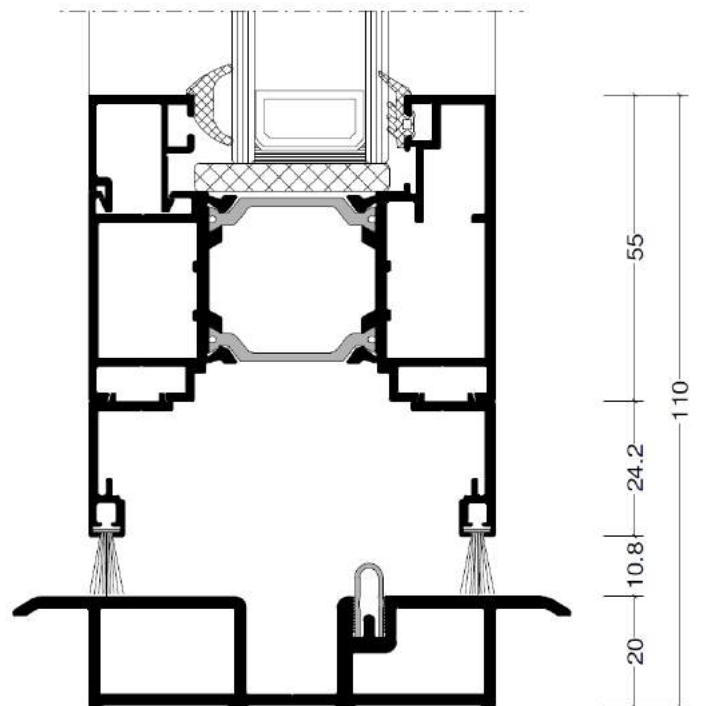
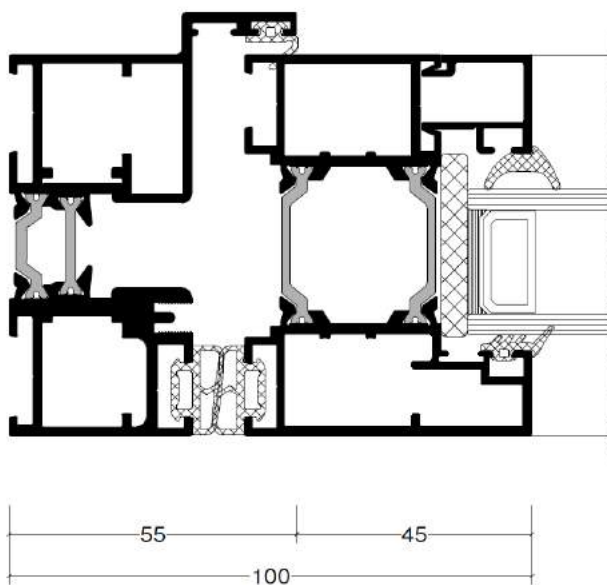
Typical Frame Sections

HORIZONTAL SECTION, MEETING STILE



BASE SECTION

HORIZONTAL SECTION, SIDE PROFILE



# 120

## bi fold door

Lever/Lever Handles

### STANDARD HANDLE



#### FINISHES

Black / White / PPC any RAL Colour /  
Stainless Steel Effect / Light Silver / Dark  
Silver / 9010 CM

### EXECUTIVE HANDLE



#### FINISHES

Black / White / PPC any RAL Colour /  
Stainless Steel Effect / Light Silver / Dark  
Silver / 9010 CM / 7016 CM

### PAS 24 HANDLE



Required for PAS 24 certified doors

#### FINISHES

Black (RAL 9005 Matt) / White Gloss /  
Brushed Satin Aluminium / Grey (RAL 7016  
Matt) / Polished Chrome / Polished Gold  
Chrome

# 120

## bi fold door

Bifold Leaf Handles

### STANDARD BIFOLD HANDLE



With or without individual pane key lock

#### FINISHES

Black (RAL 9005 Matt) / Brushed Satin  
Chrome / Grey (RAL 7016 Matt) / Polished  
Chrome / Polished Gold Chrome / White  
Gloss / PPC any RAL Colour

### EXECUTIVE BIFOLD HANDLE



With or without individual pane key lock

#### FINISHES

Black (RAL 9005 Matt) / Brushed Satin  
Chrome / Grey (RAL 7016 Matt) / Polished  
Chrome / Polished Gold Chrome / White  
Gloss / PPC any RAL Colour

# 120 bi fold door

At the Showroom



## ON SHOW

The Sieger 120 Bifold Door is available to view in real size within the Sky House Design Centre. The door on show is in a three-pane configuration which is one of the most popular configurations. This showcases a folding pair as well as a traffic door.



## SEE FINISHES + DETAILS

Seeing a picture or drawing of a potential building product is never the same as seeing it in person. When you visit the Sky House Design Centre you will see the exclusive Sieger Range each finished in a range of ways with multiple ironmongery options.



## VISIT

Contact your sales representative to arrange your personal appointment to the Sky House Design Centre and see the exclusive Sieger Systems in real life.



# 120

## bi fold door

### How to Specify...

The Sieger Architektursystem is available exclusively from the IQ Group and associated companies.

A Sieger Systems product will bring high quality European engineering to your project and are the first choice for architects and designers all over the UK.

If you have any questions about how to specify this product for your project just speak to the team who would be happy to assist.

#### **SPEAK TO THE TEAM**

If you are considering using a Sieger product on your project speak to the team at your chosen IQ Group glazing company. They will be able to advise you on the best solution for your intended design, ensure that all specification criteria are met and advise you on any feasibility areas of the installation you may not have considered.

#### **GET A QUOTATION**

We advise customers to get a quotation for the installation. This allows all parties to ensure that the preferred product and design is within budget. If it is not we can help you adjust the specification to reach all performance, design and budgetary requirements.

#### **ADD US TO YOUR NBS SPECIFICATION**

To assist you in specification we have created individual NBS Specification sheets for each Sieger Systems product. These easy to navigate documents contain all the vital information needed for specification. They are available for your to complete on your own alternatively ask your sales representative at to complete this on your behalf.

#### **PLACE THE ORDER**

When ready you (or your client or the builder) can then place the order for your products with us. A full in house handover will take place and your project will be passed to the contracts team. The project will be appointed a dedicated contracts manager who will oversee the installation process. The estimated lead time for Sieger products is 6-8 weeks but your overall glazing lead time may be different depending on the other glazing products on your project and their lead times. Please also allow 20 working days if your project requires full glazing design drawings. This will be confirmed on order.

#### **WHERE CAN I SEE SIEGER PRODUCTS?**

The Sieger Systems range is available to view at the Sky House Design Centre. Just contact your sales representative who will be happy to book you an appointment.

# 120

## bi fold door

minimal frames for glass elevations

### EUROPEAN DESIGN

The Sieger Architektursystem has been designed to the highest European standards to ensure a highly engineered finish with the best performance.

Each aluminium framing profile is selected and engineered to offer a minimal and modern finish, whilst maintaining robust performance and quality standards.

The technologically advanced thermal break system offers projects unparalleled levels of thermal insulation in keeping with modern European design.

### BRITISH MANUFACTURING

Every Sieger Architektursystem product is manufactured and fabricated bespoke to each project specification. Our state of the art fabrication site offers the latest technology in modern aluminium fabrication, ensuring Sieger Systems can offer efficient lead times and exceptional quality.

### MORE INFORMATION

For more information about the Sieger Architektursystem please contact the team who will be happy to help. Make sure you investigate our entire range to achieve a cohesive design to all elements of your building project.

