



# casement doors

slim framing for a contemporary glazing design

slim metal framing creates a  
**modern door** design

**contemporary** handles complete the  
design

Impressive levels of **security testing**  
in accordance with EN 1627

Uw values from **1.8 W/m<sup>2</sup>K**

**matching window system** available  
for cohesive design

**efficient** manufacturing + lead times

# casement doors

## Technical Data Sheet



### GLASS

Typical Glass Spec 4mm TXD outer / 20mm argon filled cavity / 4mm TXD inner with low e coating

Glass Thickness 25–34mm

Maximum Panel Weight 150kg

### FRAME

Overall Side Profile 147mm

Vent Profile 73mm

Central Panel Junction Profile (Double Doors)  
176mm

Frame Depth 70mm

### FRAME FINISHES

Powder Coated any RAL

### SIZES

Single Door 1400mm wide x 3000mm high

Double Doors 2300mm wide x 3000mm high

### CONFIGURATIONS

Single Doors / Double Doors / Inward Opening / Outward Opening / Left / Right

### PERFORMANCE

Thermal Performance  $U_w$  value of 1.8  $W/m^2K^*$

Air Permeability Class 2 in accordance with EN 12207

Water Tightness Class 5A in accordance with EN 12208

Wind Resistance Class C3 in accordance with EN 12210

Security WK3 in accordance with EN 1627

\*using a DGU of 1.2  $W/m^2K$  and Pt thermal breaks

### DRAINAGE

Proprietary flush drainage channel available

### OPTIONAL

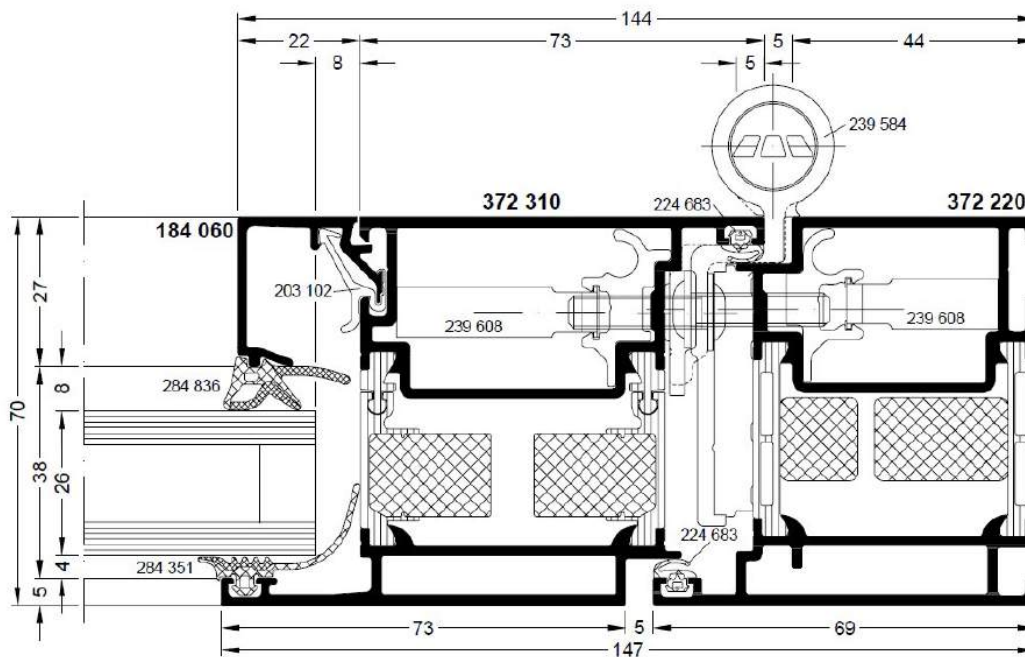
Cills are available for threshold doors

Trickle Vents are available to integrate into the aluminium framing

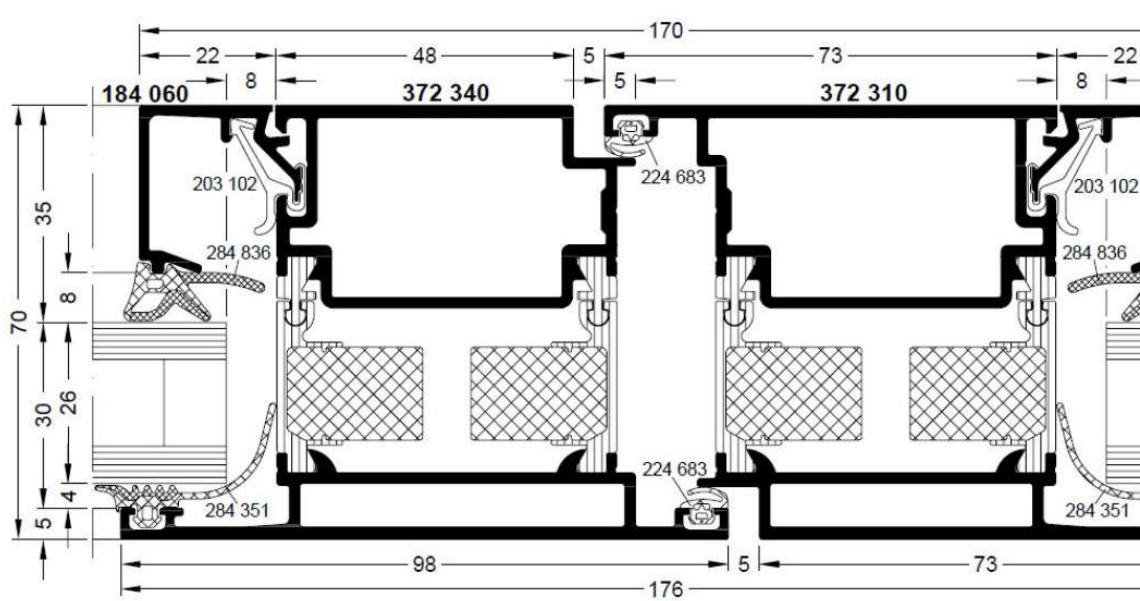
# casement doors

Typical Framing Sections

## SIDE PROFILE WITH HINGE



## DOUBLE DOOR MEETING PROFILE



# casement doors

At the Showroom



## ON SHOW

The Sieger® Casement Door is available to view in real size at the Sky House Design Centre in Amersham. The slim door is on show in a double door opening and a single configuration with fixed sidelights. The frames are finished in a anthracite grey PPC.



## SEE FINISHES + DETAILS

Seeing a picture or drawing of a potential building product is never the same as seeing it in person. When you visit the Sky House Design Centre you will see the exclusive Sieger® Range each finished in a range of ways with multiple ironmongery options.



## VISIT

Contact your sales representative to arrange your personal appointment to the Sky House Design Centre and see the exclusive Sieger® Systems in real life.

# casement doors

## How to Specify

The Sieger® casement doors are available exclusively from the Sieger® Architektursystems.

A Sieger® casement doors will bring high quality European engineering to your project and are the first choice system for architects and designers all over the UK.

If you have any questions about how to specify this product for your project just speak to the team who would be happy to assist.

### SPEAK TO THE TEAM

If you are considering using a Sieger® casement doors on your project, speak to the team. They will be able to advise you on the best solution for your intended design, ensure that all specification criteria are met and advise you on any feasibility areas of the installation you may not have considered.

Call 01494 722 882

Email [sales@siegersystems.co.uk](mailto:sales@siegersystems.co.uk)

### GET A QUOTATION

We advise customers to get a quotation for the installation. This allows all parties to ensure that the preferred product and design is within budget. If it is not we can help you adjust the specification to reach all performance, design and budgetary requirements.

### ADD US TO YOUR NBS SPECIFICATION

To assist you in specification we have created individual NBS Specification sheets for each Sieger® Systems product. These easy to navigate documents contain all the vital information needed for specification. They are available for your to complete on your own alternatively ask your sales representative at to complete this on your behalf.

### PLACE THE ORDER

When ready you (or your client or the builder) can then place the order for your products with us. A full in house handover will take place and your project will be passed to the contracts team. The project will be appointed a dedicated contracts manager who will oversee the installation process. The estimated lead time for Sieger® products is 6-8 weeks but your overall glazing lead time may be different depending on the other glazing products on your project and their lead times. Please also allow 20 working days if your project requires full glazing design drawings. This will be confirmed on order.

### WHERE CAN I SEE SIEGER PRODUCTS?

The Sieger® Systems range is available to view at the Sky House Design Centre. Just contact your sales representative who will be happy to book you an appointment.

# casement doors

slim framing for an contemporary  
design

## EUROPEAN DESIGN

The Sieger® Architektursystems have been designed to the highest European standards to ensure a highly engineered finish with the best performance.

Each aluminium framing profile is selected and engineered to offer a minimal and modern finish, whilst maintaining robust performance and quality standards.

The technologically advanced thermal break system offers projects unparalleled levels of thermal insulation in keeping with modern European design.

## BRITISH MANUFACTURING

Every Sieger® Architektursystem product is manufactured and fabricated bespoke to each project specification. Our state of the art fabrication site offers the latest technology in modern aluminium fabrication, ensuring Sieger® Systems can offer efficient lead times and exceptional quality.

## MORE INFORMATION

For more information about the Sieger® Architektursystem please contact the team who will be happy to help. Make sure you investigate our entire range to achieve a cohesive design to all elements of your building project.

