



HD window

square edge window for modern design

HD square framing perfect for
modern design projects

sightlines of only 75mm across vent
and frame

PAS 24 security testing for Part Q

impressive performance; water (9A),
air (4) + wind (2400Pa)

Uw values from 1.2 W/m²K with
triple glazing

efficient manufacturing + lead times

HD window

Technical Data Sheet



GLASS

Typical Glass Spec 6mm TXD outer / 16mm argon filled cavity / 6mm TXD inner with low e coating

Glass Thickness 24 - 40mm

FRAME

Square, thermally broken aluminium profile

Typical Vent + Frame Profile 98mm

Frame Depth 58/70mm

FRAME FINISHES

Powder Coated any RAL / Anodised / Dual Colour

CONFIGURATIONS

Fixed Windows / Side Hung Windows / Top Hung Windows / Outward Opening / Tilt and Turn

PERFORMANCE

Uw Value from 1.4 W/m²K*

Air Permeability Class 4 in accordance with EN 12207

Water Tightness Class 9A in accordance with EN 12208

Wind Resistance Class CE (2400 Pa) in accordance with EN 12210

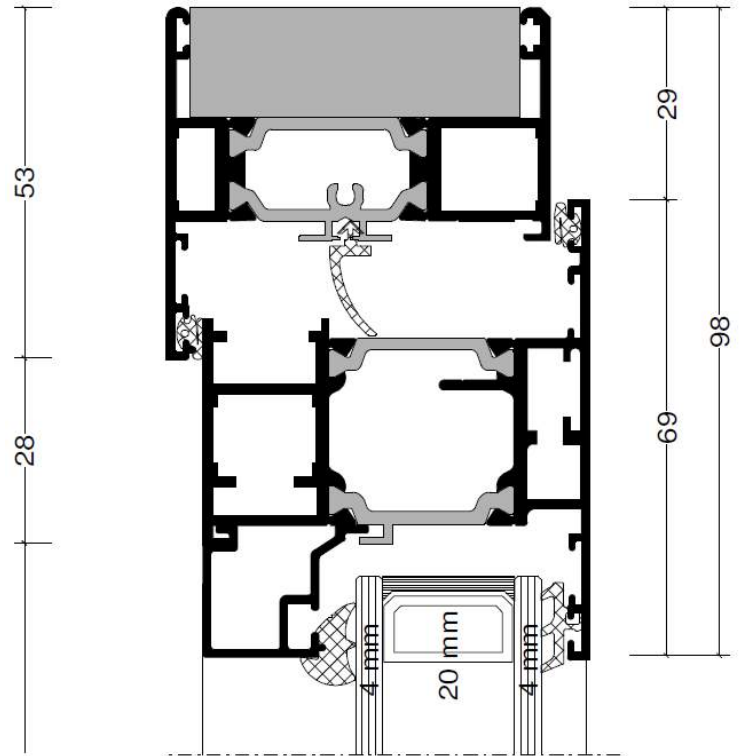
Security PAS 24

*typical Uw value using double glazing, individual project Uw values must be calculated per project.

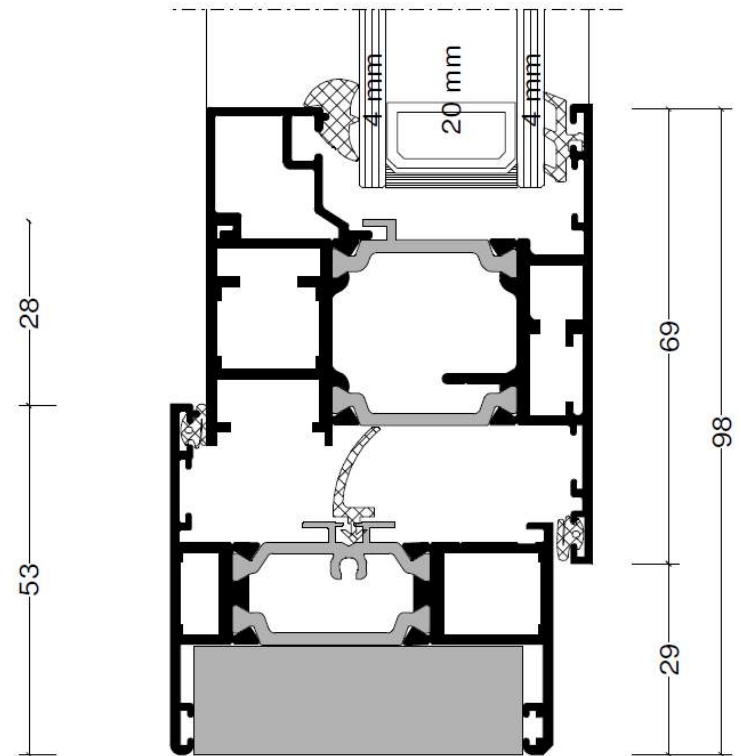
HD window

Typical Framing Sections

WINDOW HEAD FRAME



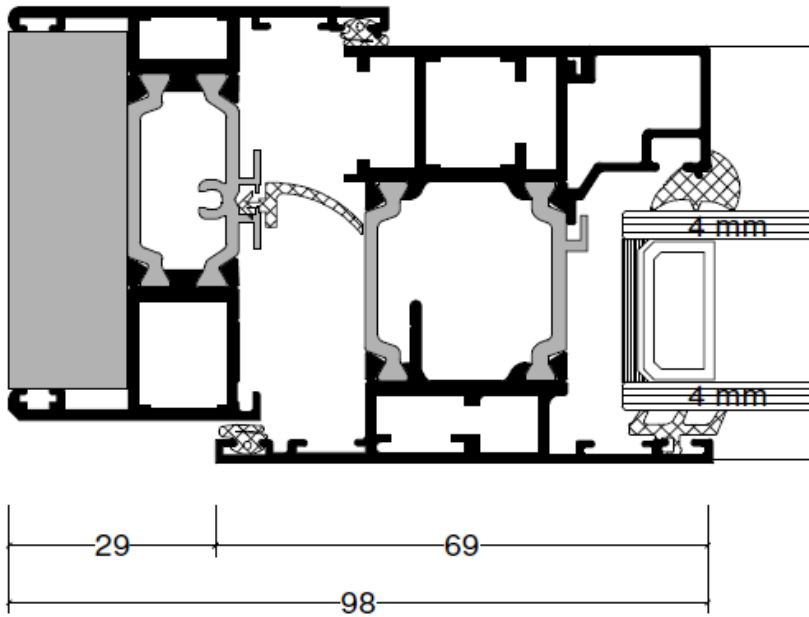
WINDOW BASE FRAME



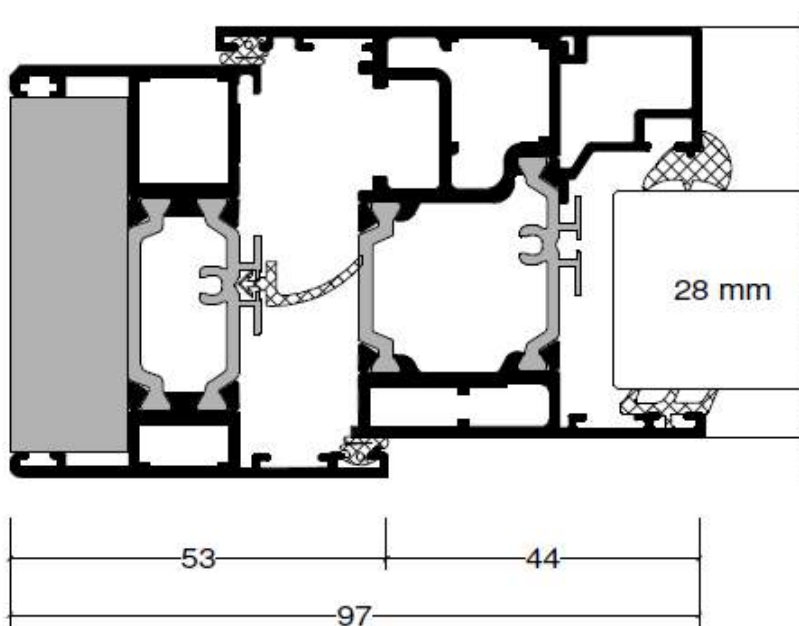
HD window

Typical Framing Sections

WINDOW SIDE PROFILE—SIDE/TOP HUNG



WINDOW SIDE PROFILE—TILT AND TURN



HD window

Maximum Sizes

Window Type	Max Width	Max Height	Max Weight
Side Hung Window	900mm	1800mm	55kg
Top Hung Window	1800mm	1800mm	180kg
Bottom Hung	1400mm	2400mm	100kg
Fixed Light	3000mm	3000mm	250kg
Tilt and Turn	1400mm	2400mm	100kg

HD window

Handles

Available in any RAL colour (matt or textured) / oil rubbed bronze / stainless steel



**THE STANDARD INLINE
HANDLE**

shown in matte black



**THE STANDARD
ESPAGLONETTE HANDLE**

shown in matte black



**THE REGENT
HANDLE**

shown in textured autumn bronze



**THE INLINE
HANDLE**

shown in stainless steel

*not suitable for top hung
window configurations



**THE ANGLED
HANDLE**

shown in textured pewter



**THE TILT AND TURN
HANDLE**

shown in textured pewter

HD window

Handles

Available in any RAL colour (matt or textured) / oil rubbed bronze / stainless steel



**THE DESIGN
ESPAGLONETTE HANDLE**

shown in textured black

*not suitable for top hung
window configurations



**THE OPERA
HANDLE**

shown in stainless steel

HD window

At the Showroom



ON SHOW

The Sieger® HD Window is available to view in real size at the Sky House Design Centre in Amersham. The window is on show in a tilt and turn configuration alongside our slim casement window.



SEE FINISHES + DETAILS

Seeing a picture or drawing of a potential building product is never the same as seeing it in person. When you visit the Sky House Design Centre you will see the exclusive Sieger® Range each finished in a range of ways with multiple ironmongery options.



VISIT

Contact your sales representative to arrange your personal appointment to the Sky House Design Centre and see the exclusive Sieger® Systems in real life.

HD window

How to Specify

The Sieger® Architektursystem is available exclusively from the IQ Group and associated companies.

A Sieger® Systems product will bring high quality European engineering to your project and are the first choice for architects and designers all over the UK.

If you have any questions about how to specify this product for your project just speak to the team who would be happy to assist.

SPEAK TO THE TEAM

If you are considering using a Sieger® product on your project speak to the team at your chosen IQ Group glazing company. They will be able to advise you on the best solution for your intended design, ensure that all specification criteria are met and advise you on any feasibility areas of the installation you may not have considered.

GET A QUOTATION

We advise customers to get a quotation for the installation. This allows all parties to ensure that the preferred product and design is within budget. If it is not we can help you adjust the specification to reach all performance, design and budgetary requirements.

ADD US TO YOUR NBS SPECIFICATION

To assist you in specification we have created individual NBS Specification sheets for each Sieger® Systems product. These easy to navigate documents contain all the vital information needed for specification. They are available for your to complete on your own alternatively ask your sales representative at to complete this on your behalf.

PLACE THE ORDER

When ready you (or your client or the builder) can then place the order for your products with us. A full in house handover will take place and your project will be passed to the contracts team. The project will be appointed a dedicated contracts manager who will oversee the installation process. The estimated lead time for Sieger® products is 6-8 weeks but your overall glazing lead time may be different depending on the other glazing products on your project and their lead times. Please also allow 20 working days if your project requires full glazing design drawings. This will be confirmed on order.

WHERE CAN I SEE SIEGER® PRODUCTS?

The Sieger® Systems range is available to view at the Sky House Design Centre. Just contact your sales representative who will be happy to book you an appointment.

HD window

square framed window for modern design

EUROPEAN DESIGN

The Sieger® Architektursystem has been designed to the highest European HDs to ensure a highly engineered finish with the best performance.

Each aluminium framing profile is selected and engineered to offer a minimal and modern finish, whilst maintaining robust performance and quality HDs.

The technologically advanced thermal break system offers projects unparalleled levels of thermal insulation in keeping with modern European design.

BRITISH MANUFACTURING

Every Sieger® Architektursystem products is manufactured and fabricated bespoke to each project specification. Our state of the art fabrication site offers the latest technology in modern aluminium fabrication, ensuring Sieger® Systems can offer efficient lead times and exceptional quality.

MORE INFORMATION

For more information about the Sieger® Architektursystem please contact the team who will be happy to help. Make sure you investigate our entire range to achieve a cohesive design to all elements of your building project.

